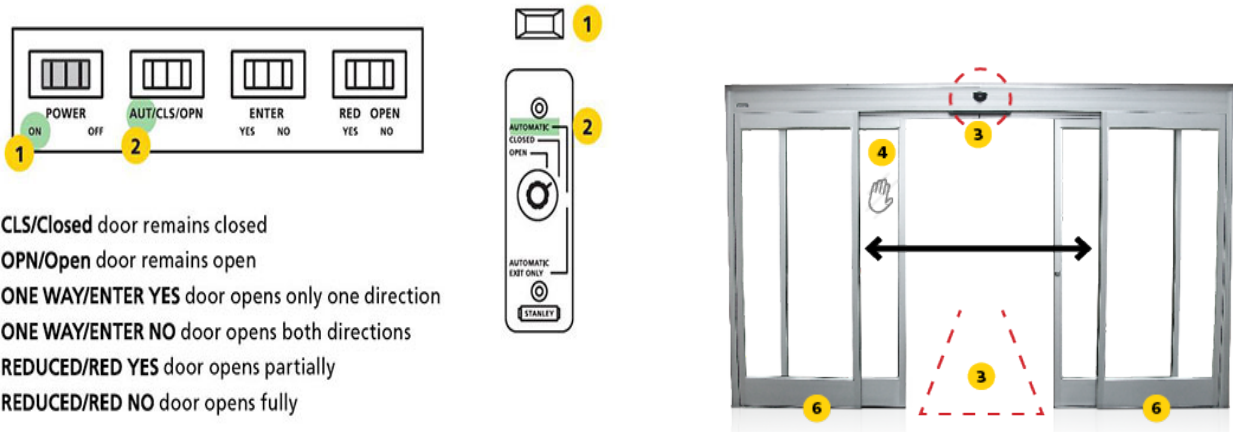


(/)

Before calling for service you can troubleshoot your STANLEY Dura-Glide by checking the following:



- CLS/Closed door remains closed
- OPN/Open door remains open
- ONE WAY/ENTER YES door opens only one direction
- ONE WAY/ENTER NO door opens both directions
- REDUCED/RED YES door opens partially
- REDUCED/RED NO door opens fully

1. Ensure power is ON (red indicator light). If the door does not open/close, turn power OFF for 15 seconds, then switch ON.
 2. Function switch is set to Automatic/AUT
 3. Overhead interior/exterior sensor zones are clear and there are no items in the pathway of door
- For the following steps, turn power OFF:**
4. Secure door to its hanger by pushing door panels in from the outside
 5. Manually slide door panels open and closed to feel for pebbles/debris in the threshold/track
 6. Clean out track or threshold area. Do not attempt to clean the guide on the bottom of sliding panel
- Never spray lubricant inside of the header cover



**Owners
Manual**
(<http://www.stanleyaccess.com/owners-manual>)

**Customer support is available 24/7 at
1-888-366-7444**



**AUTOMATIC
SLIDE
DOORS
(/SLIDE-
OVERVIEW)**

**AUTOMATIC SWING
DOOR OPERATORS
(/DOORS/AUTOMATIC-
SWING-DOOR-
OPERATORS/COMPARE)**

**REVOLVING DOORS
(/DOORS/REVOLVING-
DOORS/COMPARE)**

**MANUAL ICU
DOORS
(/DOORS/MANUAL-
ICU-CCU-
DOORS/COMPARE)**

**CONTACT
YOUR
LOCAL REP
(/CONTACT)**

STANLEY®

Access Technologies

(/)

PERFORMANCE IN ACTION™

Copyright © 2021 STANLEY Access Technologies LLC
A division of STANLEY Security Solutions, Inc.

[Site Map \(/sitemap\)](#) | [Terms of Use \(https://www.stanleyaccess.com/terms-of-use\)](https://www.stanleyaccess.com/terms-of-use) | [Privacy Policy \(https://www.stanleyaccess.com/privacy-policy\)](https://www.stanleyaccess.com/privacy-policy) | [Vulnerability Disclosure Policy \(https://www.stanleyblackanddecker.com/security\)](https://www.stanleyblackanddecker.com/security)

+ Additional Information + Additional Areas Served
Careers at STANLEY Access Technologies (</contact/careers>)